

ROCKY MOUNTAIN RESOURCES CORP.

550 Burrard St, Suite 1028, Bentall 5
Vancouver, BC V6C 2B5 Canada

February 25, 2008

ROCKY MOUNTAIN DISCOVERS NEW VANADIUM ZINC ZONE AT GIBELLINI PROJECT, NEVADA

ROCKY MOUNTAIN RESOURCES CORP. (RKY:TSXV) is pleased to announce the results of a 16 hole exploration drill test (4920 feet) on the Gibellini Project, 24 miles south of Eureka, Nevada. The program was designed to test soil vanadium and zinc anomalies 500 meters south of the known Gibellini vanadium deposit and three nickel vanadium zinc breccia pipes identified on the property.

Three holes in the Rich Hill area tested a portion of the soil anomaly, identified last summer, and discovered a stacked zone of ore grade vanadium rich shale (shown below). The shale starts at the surface, on the top of a hill, and there appears to be four stacked zones of shale enriched in vanadium and zinc. The table and map below are the results of the Rich Hill test.

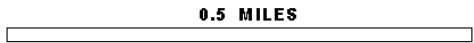
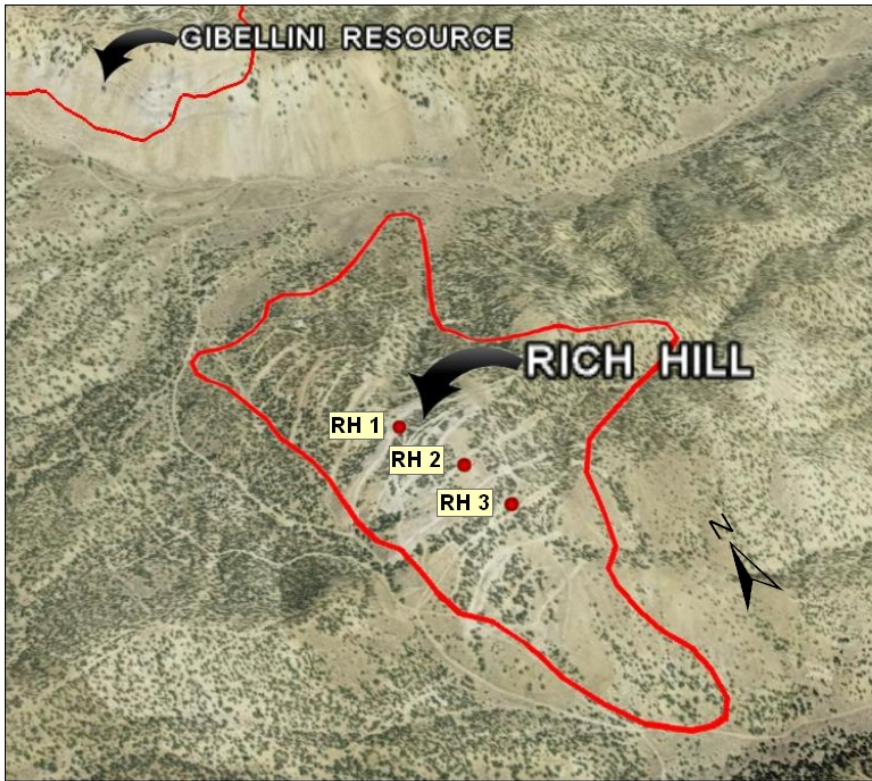
“This opens up significant potential to expand and develop a new vanadium-zinc deposit at the Gibellini project. This new zone, similar to the main Gibellini deposit is well situated for mining and preliminary metallurgical tests at Gibellini suggest the mineralization might be processed by heap leach techniques, which would open the door to low cost production at the project with relatively low start-up capital demands” says Brian McAlister, President of Rocky Mountain Resources. “We now have additional exploration potential along with the newly announced vanadium resource.”


Rich Hill Vanadium Drill Test Results- Gibellini Project, Nevada


	<u>V₂O₅</u> <u>%</u>	<u>TRUE</u> <u>Width</u> <u>(ft)</u>	<u>Drill</u> <u>Interval</u> <u>(ft)</u>	<u>Zinc</u> <u>%</u>	<u>TRUE</u> <u>Width</u> <u>(ft)</u>	<u>Drill</u> <u>Interval</u> <u>(ft)</u>	<u>Total</u> <u>Depth</u> <u>(ft)</u>
RH-1	0.462	45	0-45	0.21	235	15-250	500
	0.204	20	70-90				
	0.173	55	110-165				
	0.168	15	120-135				
	0.138	5	265-270				
RH-2	0.287	160	0-160	0.308	175	80-255	600
	0.267	50	200-250				
	0.196	30	445-475				
	<u>0.297</u>	<u>50</u>	<u>530-580</u>				
	<u>0.182</u>	<u>50</u>	<u>530-580</u>				
RH-3	0.265	90	0-90	0.21	30	70-100	335
	<u>0.12</u>	<u>10</u>	<u>135-145</u>				

Drilling was conducted by Drift Exploration, of Elko, Nevada. Assay analysis was conducted by ALS Chemex of Sparks, Nevada. Quality control and sampling was conducted by independent contractors. All widths are estimated as true widths.

Drill hole location map- Gibellini project-



- Legend**
-  Vanadium Soil Anomaly Showing + 500 ppm
 -  RH Drilling

 <p>RMP Resources Inc. <small>600 Lakeshore Court, Suite 10 Eureka, NV 89001 400-478-8000 2024-759-8800 Fax: 707-478-3422</small></p>		<p>Gibellini Project Rich Hill Area EUREKA COUNTY, NV</p>	
DATE: January 17 - 2008	REV:	SCALE: 1:10000	SOURCE: L. HAFEN

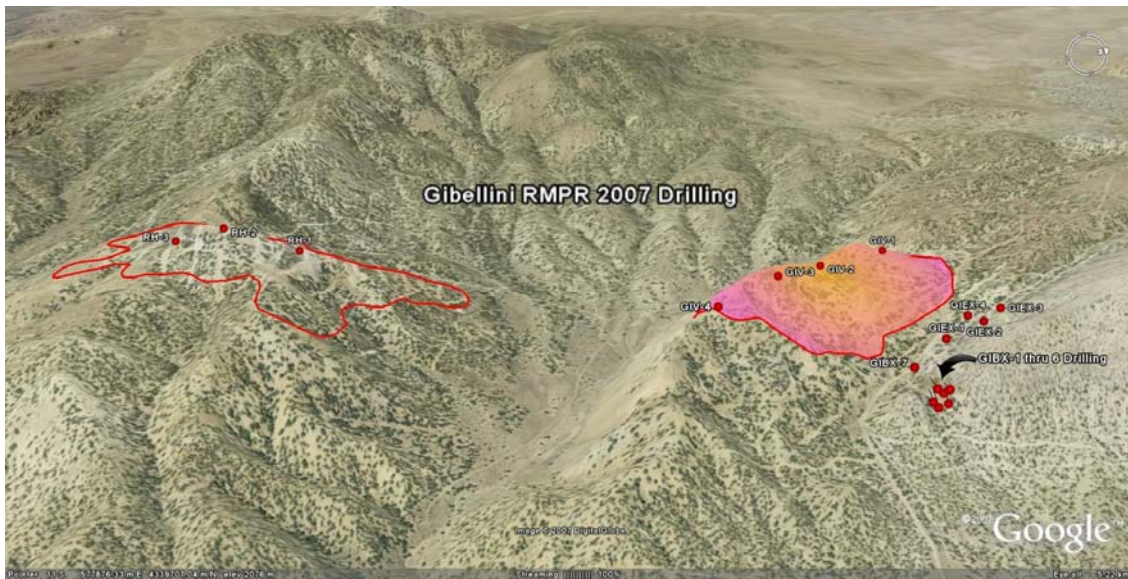
In addition, thirteen holes were also drilled to explore three nickel- vanadium- zinc bearing breccia pipes discovered on the property hosted in a massive Devonian aged limestone. The pipes were 50 to 200 feet across and had been partially replaced by manganese and iron oxides. Surface and underground sampling had identified zones of strong nickel, zinc, and vanadium with minor amounts of molybdenum, cobalt, barite, and platinum. The results of the holes are shown in the table below. Results were calculated at a 0.10 % cut-off for nickel, vanadium, and zinc.

Breccia Exploration 2007 Drill Results- Gibellini Project, Nevada

Drill Hole	Nickel	Vanadium	Drill Width	Down hole Interval	Zinc %	Drill Width	Down hole Interval	Depth of Hole
	Ni %	V ₂ O ₅ %	feet	(ft)		Feet	(ft)	Feet
	GIBX-1	0.19 0.58	0.07 0.26	35 95	0-35 60-155	0.52	230	60 to 290'
GIBX-2	0.11 0.53 0.31	0.03 0.14 0.10	20 15 10	0 -20 45-60 75-85	0.53 1.21 0.91	20 15 10	0 to 20' 45 to 60' 75 to 85'	110
GIBX-3	0.12		90	30-120	0.32	200	0 to 200'	200
GIBX-4		-			0.12 0.16 0.12	15 10 25	75 to 90' 185-200 220-245	245
GIBX-5		-			0.13	20	0 to 20'	300
GIBX-6	*NSI							200
GIBX-7	0.11	0.04	5	110-115	0.28	195	90-285'	300
GIEX-1					0.18	5	25 to 30'	400
GIEX-2	0.30	0.12	10	10-20.	1.30	25	10 to 35'	200
GIEX-3					0.12	10	25-35'	300
GIEX-4	*NSI							300

Drilling was conducted by Drift Exploration, of Elko, Nevada. Assay analysis was conducted by ALS Chemex of Sparks, Nevada. Quality control and sampling was conducted by independent contractors. (* NSI) indicates no significant mineralized intercepts in that hole. Drill intervals are reported instead of true widths because of the difficulty to calculate the orientation of the breccia pipes with limited drilling. All the holes were angled across the pipes.

The results of the breccia pipe tests suggest that the nickel and vanadium values decrease at depth and at 150 feet deep the pipes are only weakly mineralized with zinc. No additional work is currently planned on the breccia pipe targets. The soil anomaly is larger in areal extent than the Gibellini deposit and will take additional work to fully delineate the Rich Hill zone.



Rocky Mountain Resources is a precious and base metal exploration and development company focused on the development of new resources. Vanadium is a metal used in specialty steel and has shown significant increases in demand and pricing. Information on the on the Company and the projects are found at www.rkyresources.com.

This release has been reviewed and approved by Alan Branham, (M.Sc. and CPG), a “qualified person” as that term is defined in National Instrument 43-101.

For further information, please contact Brian McAlister, President of Rocky Mountain Resources Corp., by telephone at (604) 408-7553.

ON BEHALF OF THE BOARD

"Brian McAlister"

Brian McAlister, President

THE TSX VENTURE EXCHANGE DOES NOT ACCEPT RESPONSIBILITY FOR ACCURACY OR
ADEQUACY OF THIS RELEASE